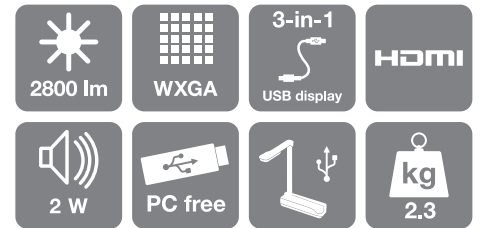


# Epson EB-W12 projector

DATASHEET



Make your business' budget go further with the Epson EB-W12 – the high-quality WXGA projector with a wide range of features and an affordable price tag.

This projector is straightforward to set up and use, allowing you to focus on delivering first-class business presentations. With high White and Colour Light Output of 2,800 lumens, you can present even in a bright room. The WXGA resolution fits your wide-screen laptop perfectly and the 3 000:1 contrast ratio ensures sharper detail.

Aligning the picture is quick and easy with both automatic vertical keystone and manual horizontal keystone adjuster. The horizontal keystone slider is an innovative and intuitive new design feature from Epson, making it easy to adjust images to the correct shape when the projector is placed at an angle to the screen.

With Epson's 3-in-1 USB Display feature, one cable is all you need for picture, sound and page up/down control - it's the easiest way to display what's on your PC or Mac. Alternatively, the PC-free function lets you present still photos directly from a USB stick without powering up your computer. This means that you have less to carry between meetings and can focus on your presentation.

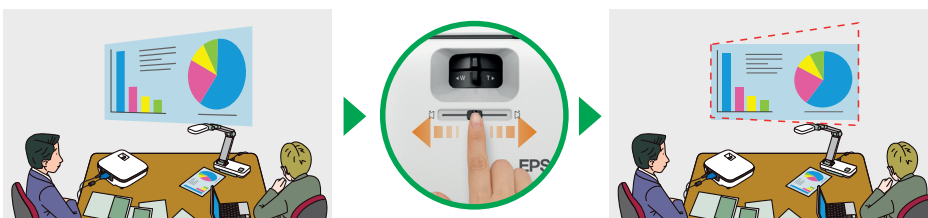
Capture the attention of your audience by plugging the optional Epson ELPDC06 USB Visualiser directly into the projector to give a close-up view of 3D objects. The HDMI input lets you display high-definition content, while a built-in 2W speaker ensures that audio is delivered with clarity. The stylish and compact EB-W12 covers all your mobile needs.

## KEY FEATURES

- Sharp picture quality thanks to 2,800 lumens, 3 000:1 contrast ratio and wide aspect WXGA resolution
- Automatic vertical keystone correction and manual horizontal keystone correction adjuster for easy set-up
- PC-free: present still photos directly from USB storage devices
- 3-in-1 USB Display: one USB cable is all that's needed for picture, sound and page up/down control



Eliminate the need for photocopies: share 3D objects using the ELPDC06 visualiser



Horizontal Keystone Correction Adjuster: This intuitive new slider lets you adjust images to the correct shape when the projector is at an angle to the screen

**No.1**  
SINCE 2001  
**EPSON**  
WORLD LEADER  
IN PROJECTORS

**EPSON**  
EXCEED YOUR VISION

## PRODUCT SPECIFICATIONS

PROJECTION TECHNOLOGY LCD Panel	3LCD Technology 0.59-inch with MLA
RESOLUTION	WXGA (1280x800) (16:10 aspect ratio) Up to 1080p
WHITE LIGHT OUTPUT * Normal/Eco	2800 / 2240 lumens
COLOUR LIGHT OUTPUT * Normal/Eco	2800 / 2240 lumens
CONTRAST	3 000:1
SCREEN SIZE	33-inch to 318-inch
PROJECTION DISTANCE	60-inch screen: 1.68–2.02m
THROW RATIO	1.30–1.56:1
ZOOM	Optical x1.2
KEystone CORRECTION	Automatic vertical ±30°, and manual horizontal adjuster ±30°
LENS TYPE F Number Focal Length Offset Focus	1.58–1.72 16.9–20.28mm 10:1 Manual focus
LAMP Life (Normal/Eco) Type	4000 / 5000 hours 200W UHE E-TORL
CONNECTIVITY Video Input Computer Input USB Memory Device Input 3-in-1 USB Display Input Digital Input Audio Input Control Input Epson USB Visualiser Input	1 x RCA (yellow), 1 x S-Video, 1 x Component (D-sub 15-pin) 1 x D-sub 15-pin (RGB), 1 x USB 2.0 type B 1 x USB 2.0 type A 1 x USB 2.0 type B 1 x HDMI 1 x RCA (White/Red) 1 x USB 2.0 type B ELPDC06 (direct connection via USB A)
ADVANCED FEATURES Security Operation EasyMP PC-Free Display	Padlock & security cable hole, Kensington lock, password protection Direct Power On/Off, Instant Off, AV Mute Slide Photo viewer via USB type A (compatible with JPEG/PNG/GIF/BMP) 8 colour modes
LANGUAGES	English / French / German / Italian / Spanish / Dutch / Portuguese / Russian / Swedish / Norwegian / Finnish / Danish / Bulgarian / Polish / Hungarian / Czech / Slovak / Romanian / Croatian / Slovenian / Ukrainian / Catalan / Greek / Turkish / Arabic / Hebrew / Hindi / Japanese / Simplified Chinese / Traditional Chinese / Korean / Thai / Indonesian / Malay / Vietnamese
NOISE LEVEL (Normal/Eco)	37 / 29dB
SOUND	1 x 2W speaker
WEIGHT	2.3kg
DIMENSIONS (W x D x H)	295 x 228 x 77mm
POWER CONSUMPTION Normal/Eco Standby	270 / 223W 0.47W
WARRANTY	
SAFETY REGULATIONS	IEC 60950-1 1st edition (CE marking) EMC directive (89/336/EEC) Recycling regulations

\* ISO 21118

## PRODUCT LOGISTICS

SKU CODE	
BARCODE	
WHAT'S IN THE BOX	EB-W12 projector, power cable 1.8m, computer cable 1.8m, USB cable 1.8m, remote control and batteries, carrying case, user's manual set
GROSS WEIGHT	
CARTON DIMENSIONS (L x W x H)	



For more information please contact:

Telephone: 0871 222 6702 (UK)\*  
01 436 7742 (Republic of Ireland)E-mail: [enquiries@epson.co.uk](mailto:enquiries@epson.co.uk)Chat: [etalk.epson-europe.com](mailto:etalk.epson-europe.com)

Fax: 0871 222 6740

Web: [www.epson.co.uk](http://www.epson.co.uk)  
[www.epson.ie](http://www.epson.ie)

\* Calls cost 10p per minute plus network extras.

Trademarks and registered trademarks are the property of Seiko Epson Corporation or their respective owners. Product information is subject to change without prior notice.

## OPTIONAL ACCESSORIES

- Spare lamp  
V13H010L67 (ELPLP67)
- Air Filter  
V13H134A32 (ELPAF32)
- 50-inch Desktop screen 4:3  
V12H002S32 (ELPSC32)
- 80-inch Mobile screen 16:9  
V12H002S21 (ELPSC21)
- 80-inch Pull-up screen 16:10  
V12H002S24 (ELPSC24)
- Multi-aspect screen  
65-inch/74-inch/80-inch  
V12H002S26 (ELPSC26)
- Epson USB Visualiser  
V12H321003 (ELPDC06)
- Epson Desktop Visualiser  
V12H377060 (ELPDC11)
- Ceiling Mount  
V12H003B23 (ELPMB23)
- Ceiling pipe 668-918mm  
V12H003P13 (ELPFP13)
- Ceiling pipe 918-1168mm  
V12H003P14 (ELPFP14)



Compact, portable screens: the ELPSC26 (top) offers three aspect ratios while the lightweight ELPSC32 (bottom) can be placed directly on your desktop